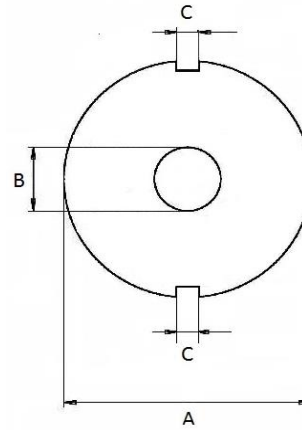


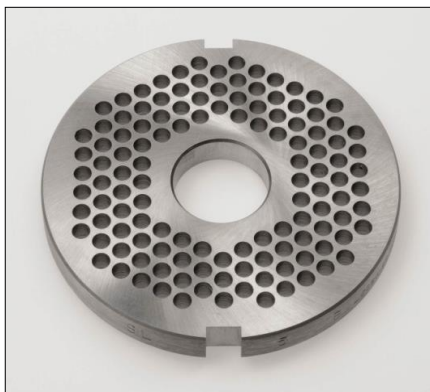
| Bezeichnung | EAN-Nr. | |
|------------------------|------------------|--|
| Inox - rostfrei | | |
| Scheibe B98 Cod 1.5 mm | 76 12892 11110 3 | |
| Scheibe B98 Cod 2 mm | 76 12892 11111 0 | |
| Scheibe B98 Cod 2.5 mm | 76 12892 11112 7 | |
| Scheibe B98 Cod 3 mm | 76 12892 11113 4 | |
| Scheibe B98 Cod 3.5 mm | 76 12892 11114 1 | |
| Scheibe B98 Cod 4 mm | 76 12892 11115 8 | |
| Scheibe B98 Cod 4.5 mm | 76 12892 11116 5 | |
| Scheibe B98 Cod 5 mm | 76 12892 11117 2 | |
| Scheibe B98 Cod 6 mm | 76 12892 11118 9 | |
| Scheibe B98 Cod 8 mm | 76 12892 11120 2 | |



A = 98mm B = 26mm
C = b2 = 9.5mm

Gleich wie Standard Lochscheiben (1 Nute):

| | | |
|--------------------------------|------------------|---|
| Scheibe B98 10 mm | 76 12892 11022 9 | |
| Scheibe B98 13 mm | 76 12892 11025 0 | |
| Scheibe B98 16 mm | 76 12892 11028 1 | |
| Scheibe B98 20 mm | 76 12892 11032 8 | |
| Scheibe B98 25 mm | 76 12892 11037 3 | |
| Vorschneider B98 No.0 Standard | 76 12892 11000 7 | Konische Bohrung, Mittelloch 19.5 mm |
| Vorschneider B98 No.0 gerade | 76 12892 11001 4 | Gerade Bohrung, Mittelloch 19.5 mm |
| Vorschneider B98 No.0 26mm | 76 12892 11002 1 | Gerade Bohrung, Mittelloch 26 mm |



Lochscheibe B98 codiert (2 gleich grosse Nuten)