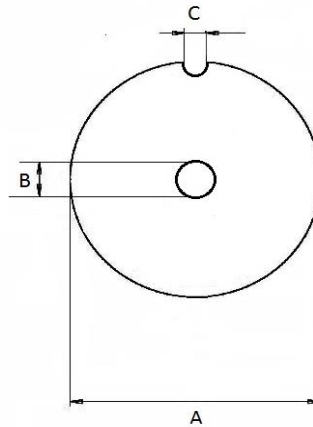


Product	EAN-No.	
Inox - stainless		
Plate No.32 1.5 mm (1/16")	76 12892 14010 3	
Plate No.32 2 mm (5/64")	76 12892 14011 0	
Plate No.32 2.5 mm (3/32")	76 12892 14012 7	
Plate No.32 3 mm (1/8")	76 12892 14013 4	
Plate No.32 3.5 mm (9/64")	76 12892 14014 1	
Plate No.32 4 mm (5/32")	76 12892 14015 8	
Plate No.32 4.5 mm (3/16")	76 12892 14016 5	
Plate No.32 5 mm (6/32")	76 12892 14017 2	
Plate No.32 6 mm (1/4")	76 12892 14018 9	
Plate No.32 8 mm (5/16")	76 12892 14020 2	
Plate No.32 10 mm (3/8")	76 12892 14022 6	
Plate No.32 13 mm (1/2")	76 12892 14025 7	
Plate No.32 16 mm (5/8")	76 12892 14028 8	
Plate No.32 20 mm (3/4")	76 12892 14032 5	
Plate No.32 25 mm (1")	76 12892 14037 0	
Kidney plate No.32 No.0	76 12892 14000 4	For premincing
Knife No.32, 3 wings, inox	76 12892 20320 4	With exchangeable blades, + key
Knife No.32, 4 wings, inox	76 12892 20321 1	Solid knife
Spare blades No.32	76 12892 30032 3	1 packet with 9 blades
Spare screws/nuts	76 12892 40012 2	1 packet with 5 screws/nuts
Spare key	76 12892 50070 9	Key for the screws
Knife No.32, 4 wings, ZICO	76 12892 20322 8	Solid knife form ZICO



A = 100mm B = 13.5mm C = 6.5mm



Knife with blades



Spare blades



Solid knife



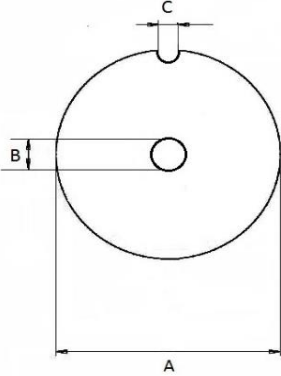
Plate



Knife from ZICO

No.32 with hub

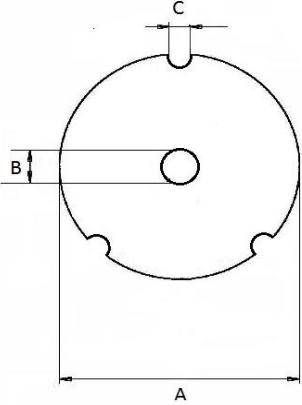


Product	EAN-No.			
Inox - stainless				
plate No.32 2 mm (5/64") with hub	76 12892 14211 4		 <p>A = 100mm B = 13.5mm C = 6.5mm</p>	
plate No.32 2.5 mm (3/32") with hub	76 12892 14212 1			
plate No.32 3 mm (1/8") with hub	76 12892 14213 8			
plate No.32 3.5 mm (9/64") with hub	76 12892 14214 5			
plate No.32 4 mm (5/32") with hub	76 12892 14215 2			
plate No.32 4.5 mm (3/16") with hub	76 12892 14216 9			
plate No.32 5 mm (6/32") with hub	76 12892 14217 6			
plate No.32 6 mm (1/4") with hub	76 12892 14218 3			
plate No.32 8 mm (5/16") with hub	76 12892 14220 6			
plate No.32 10 mm (3/8") with hub	76 12892 14222 0			
plate No.32 13 mm (1/2") with hub	76 12892 14225 1			
plate No.32 16 mm (5/8") with hub	76 12892 14228 2			
plate No.32 20 mm (3/4") with hub	76 12892 14232 9			
plate No.32 25 mm (1") with hub	76 12892 14237 4			
Kidney plate No.32 No.0 with hub	76 12892 14200 8			For premincing



No.32 with 3 notches



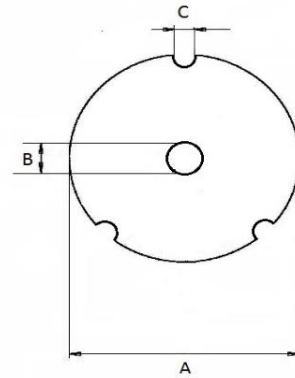
Product	EAN-No.		
Inox - stainless			
Plate No.32 1.5 mm (1/16")	76 12892 14410 1	 <p>A = 100mm B = 13.5mm C = 6.5mm</p>	
Plate No.32 2 mm (5/64")	76 12892 14411 8		
Plate No.32 2.5 mm (3/32")	76 12892 14412 5		
Plate No.32 3 mm (1/8")	76 12892 14413 2		
Plate No.32 3.5 mm (9/64")	76 12892 14414 9		
Plate No.32 4 mm (5/32")	76 12892 14415 6		
Plate No.32 4.5 mm (3/16")	76 12892 14416 3		
Plate No.32 5 mm (6/32")	76 12892 14417 0		
Plate No.32 6 mm (1/4")	76 12892 14418 7		
Plate No.32 8 mm (5/16")	76 12892 14420 0		
Plate No.32 10 mm (3/8")	76 12892 14422 4		
Plate No.32 13 mm (1/2")	76 12892 14425 5		
Plate No.32 16 mm (5/8")	76 12892 14428 6		
Plate No.32 20 mm (3/4")	76 12892 14432 3		
Plate No.32 25 mm (1")	76 12892 14437 8		
Kidney plate No.32 No.0	76 12892 14400 2		For premincing



No.32 with 3 notches / hub



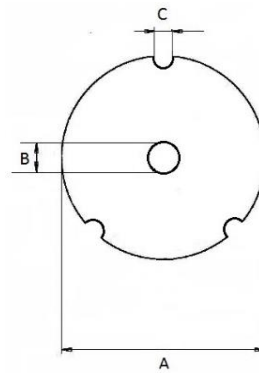
Product	EAN-No.	
Inox - stainless		
	76 12892 14611 2	
Plate No.32 2.5 mm (3/32")	76 12892 14612 9	
Plate No.32 3 mm (1/8")	76 12892 14613 6	
Plate No.32 3.5 mm (9/64")	76 12892 14614 3	
Plate No.32 4 mm (5/32")	76 12892 14615 0	
Plate No.32 4.5 mm (3/16")	76 12892 14616 7	
Plate No.32 5 mm (6/32")	76 12892 14617 4	
Plate No.32 6 mm (1/4")	76 12892 14618 1	
Plate No.32 8 mm (5/16")	76 12892 14620 4	
Plate No.32 10 mm (3/8")	76 12892 14622 8	
Plate No.32 13 mm (1/2")	76 12892 14625 9	
Plate No.32 16 mm (5/8")	76 12892 14628 0	
Plate No.32 20 mm (3/4")	76 12892 14632 7	
Plate No.32 25 mm (1")	76 12892 14637 2	
Kidney plate No.32 No.0	76 12892 14600 6	For premincing



A = 100mm B = 13.5mm C = 6.5mm



Product	EAN-No.	
Inox - stainless		
plate No.32 3 mm (1/8")	76 12892 14813 0	
plate No.32 3.5 mm (9/64")	76 12892 14814 7	
plate No.32 4 mm (5/32")	76 12892 14815 4	
plate No.32 4.5 mm (3/16")	76 12892 14816 1	
plate No.32 5 mm (6/32")	76 12892 14817 8	
plate No.32 6 mm (1/4")	76 12892 14818 5	
plate No.32 8 mm (5/16")	76 12892 14820 8	
plate No.32 10 mm (3/8")	76 12892 14822 2	
plate No.32 13 mm (1/2")	76 12892 14825 3	
plate No.32 16 mm (5/8")	76 12892 14828 4	
plate No.32 20 mm (3/4")	76 12892 14832 1	
plate No.32 25 mm (1")	76 12892 14837 6	
Kidney plate No.32 No.0	76 12892 14800 0	For premincing



A = 100mm B = 13.5mm C = 6.5mm

Thickness 12.5

For premincing



Thickness 12.5mm